

# Sophie


## SWIMSUIT PATTERN

### CUP SIZE GUIDE

CUP 1	.....
CUP 2	.....
CUP 3	.....
CUP 4	.....
CUP 5	.....

### LEGEND

 NOTCH

 GRAINLINE

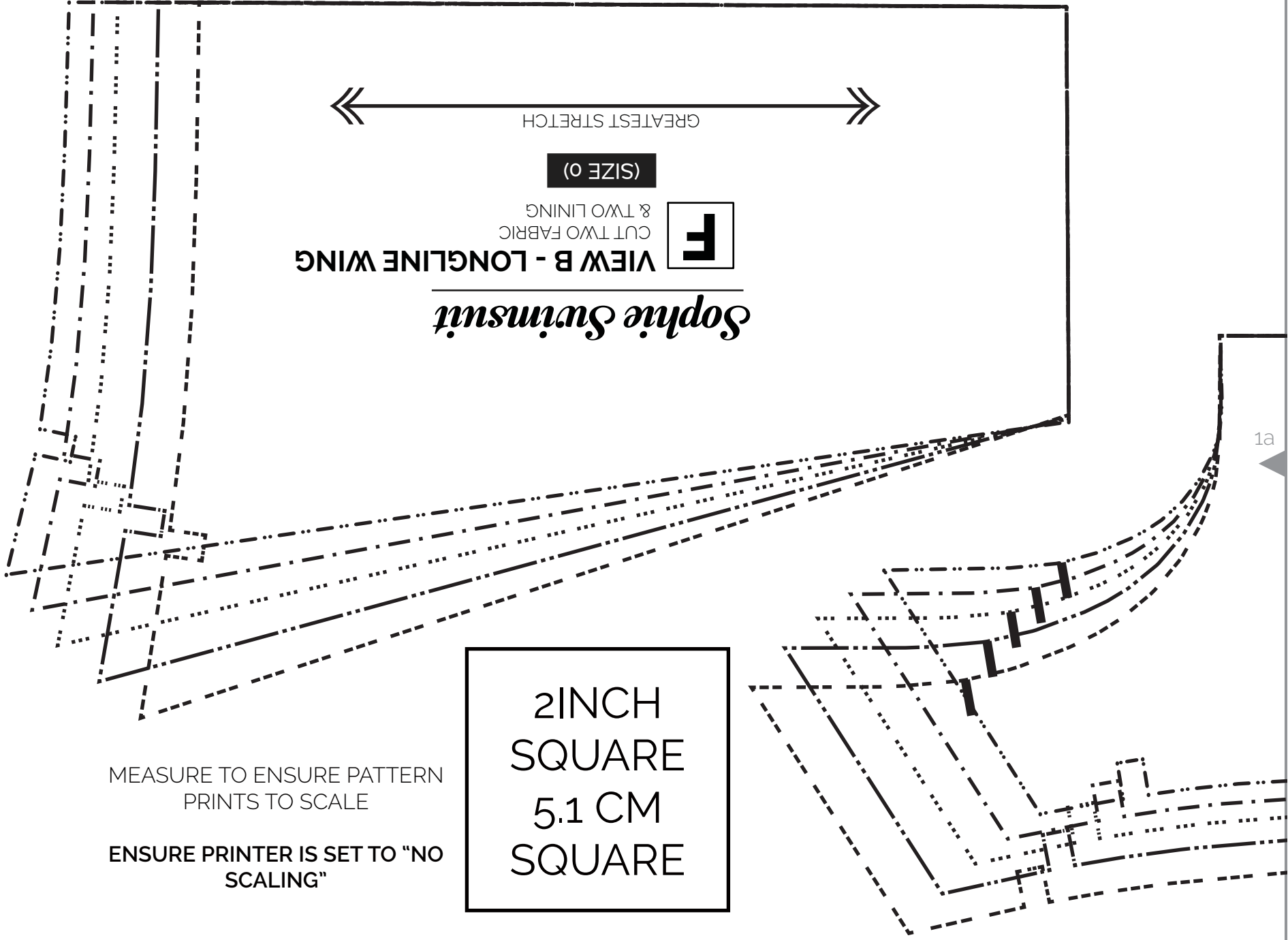
## PRINTING LEGEND

<b>SIZE 0</b>	PAGE 2-3
<b>SIZE 2</b>	PAGE 4-5
<b>SIZE 4</b>	PAGE 6-7
<b>SIZE 6</b>	PAGE 8-9
<b>SIZE 8</b>	PAGE 10-11
<b>SIZE 10</b>	PAGE 12-13
<b>SIZE 12</b>	PAGE 14-16
<b>SIZE 14</b>	PAGE 17-19
<b>SIZE 16</b>	PAGE 20-22
<b>SIZE 18</b>	PAGE 23-25
<b>SIZE 20</b>	PAGE 26-28

*Closet  
case*  
— PATTERNS —

The contents of this pattern (including instructions, photos & diagrams) are protected by copyright and belong exclusively to Closet Case Patterns. You may use this pattern for domestic use only. Garments made from this pattern and sold commercially are expressly prohibited. No part of this pattern may be reproduced or resold, although it is permitted to print single copies for domestic use.

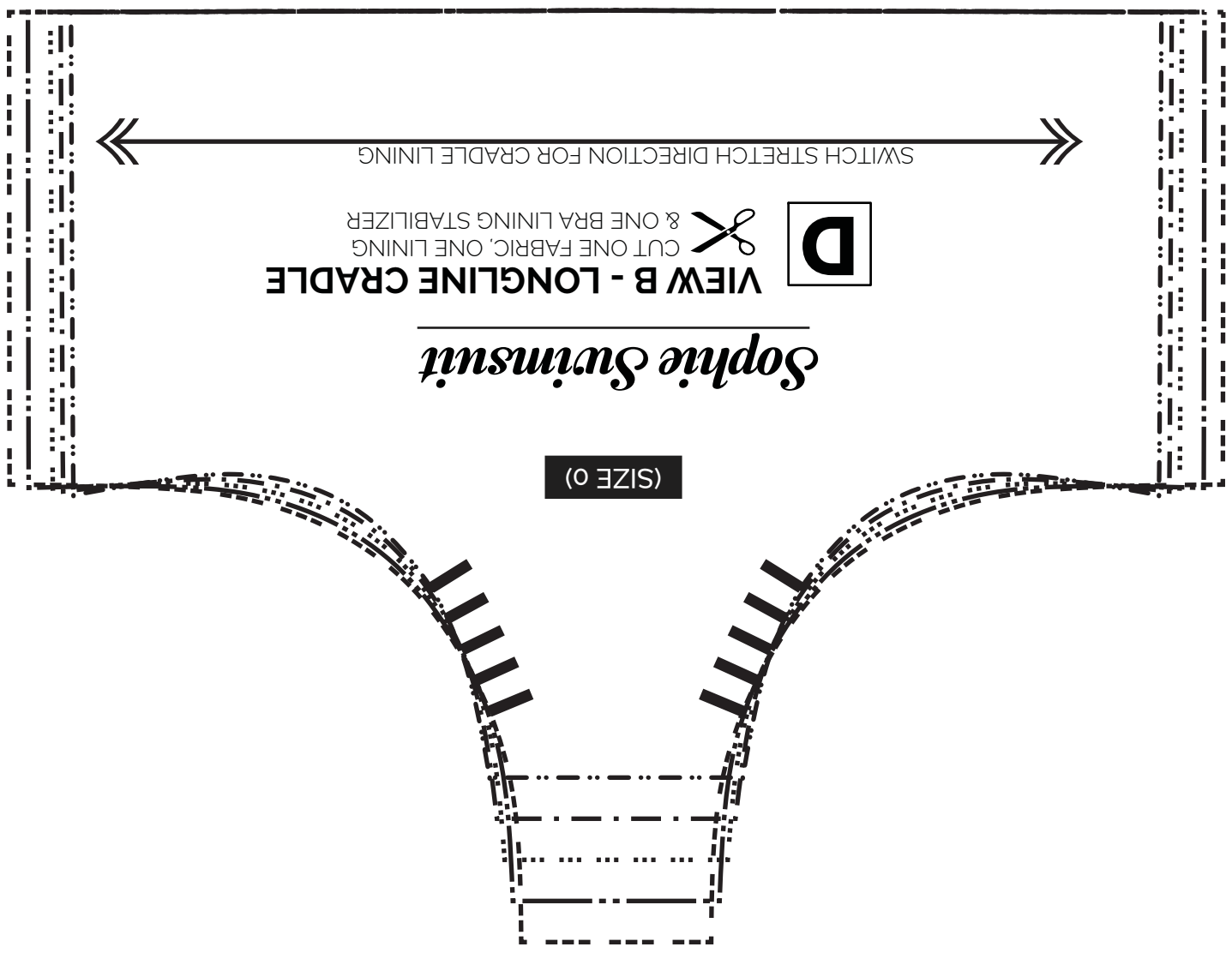
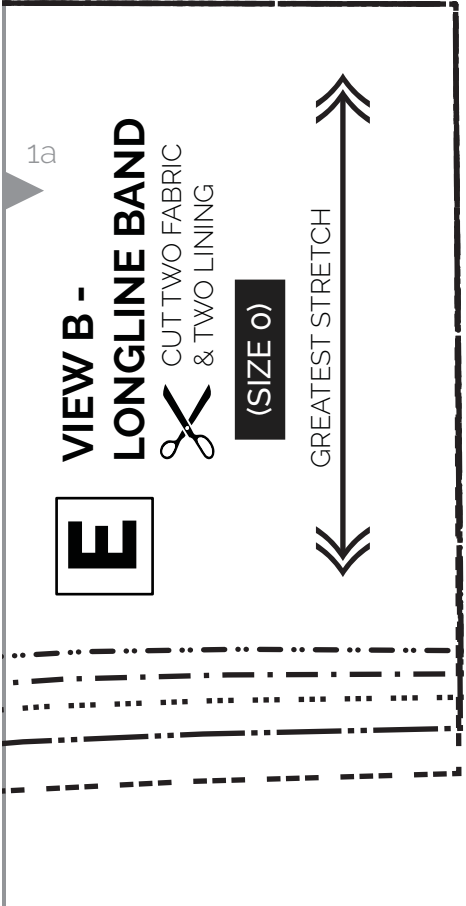
*Sophie Swimsuit*  
**VIEW B - LONGLINE WING**  
CUT TWO FABRIC  
& TWO LINING  
F  
(SIZE 0)



MEASURE TO ENSURE PATTERN  
PRINTS TO SCALE  
ENSURE PRINTER IS SET TO "NO  
SCALING"

2 INCH  
SQUARE  
5.1 CM  
SQUARE

1a





GREATEST STRETCH

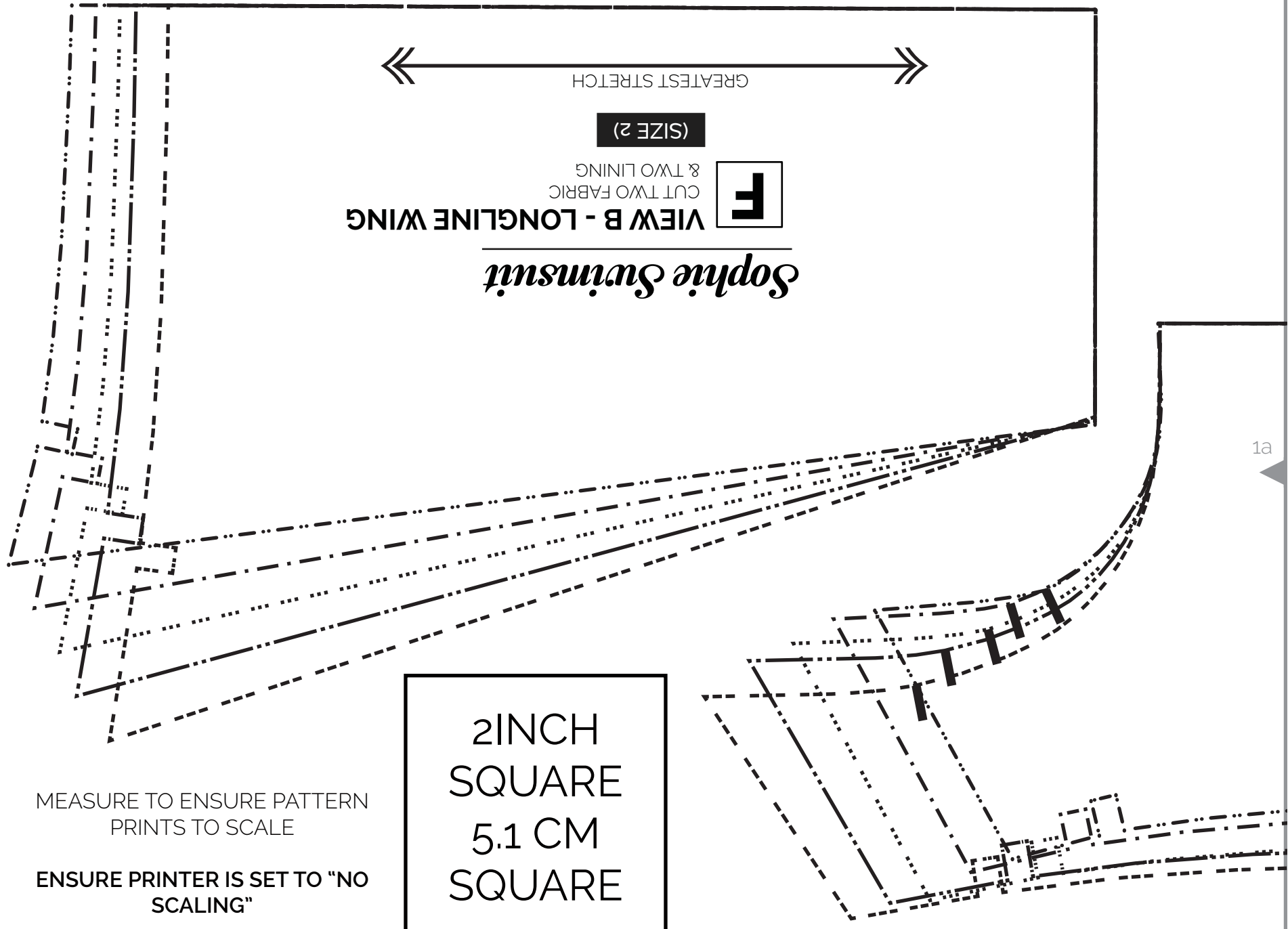
(SIZE 2)

CUT TWO FABRIC  
& TWO LINING



VIEW B - LONGLINE WING

*Sophie Swimsuit*



1a

MEASURE TO ENSURE PATTERN  
PRINTS TO SCALE

ENSURE PRINTER IS SET TO "NO  
SCALING"

2 INCH  
SQUARE  
5.1 CM  
SQUARE

1a

**VIEW B -  
LONGLINE BAND**

CUT TWO FABRIC  
& TWO LINING



(SIZE 2)

GREATEST STRETCH



**E**



*Sophie Swimsuit*

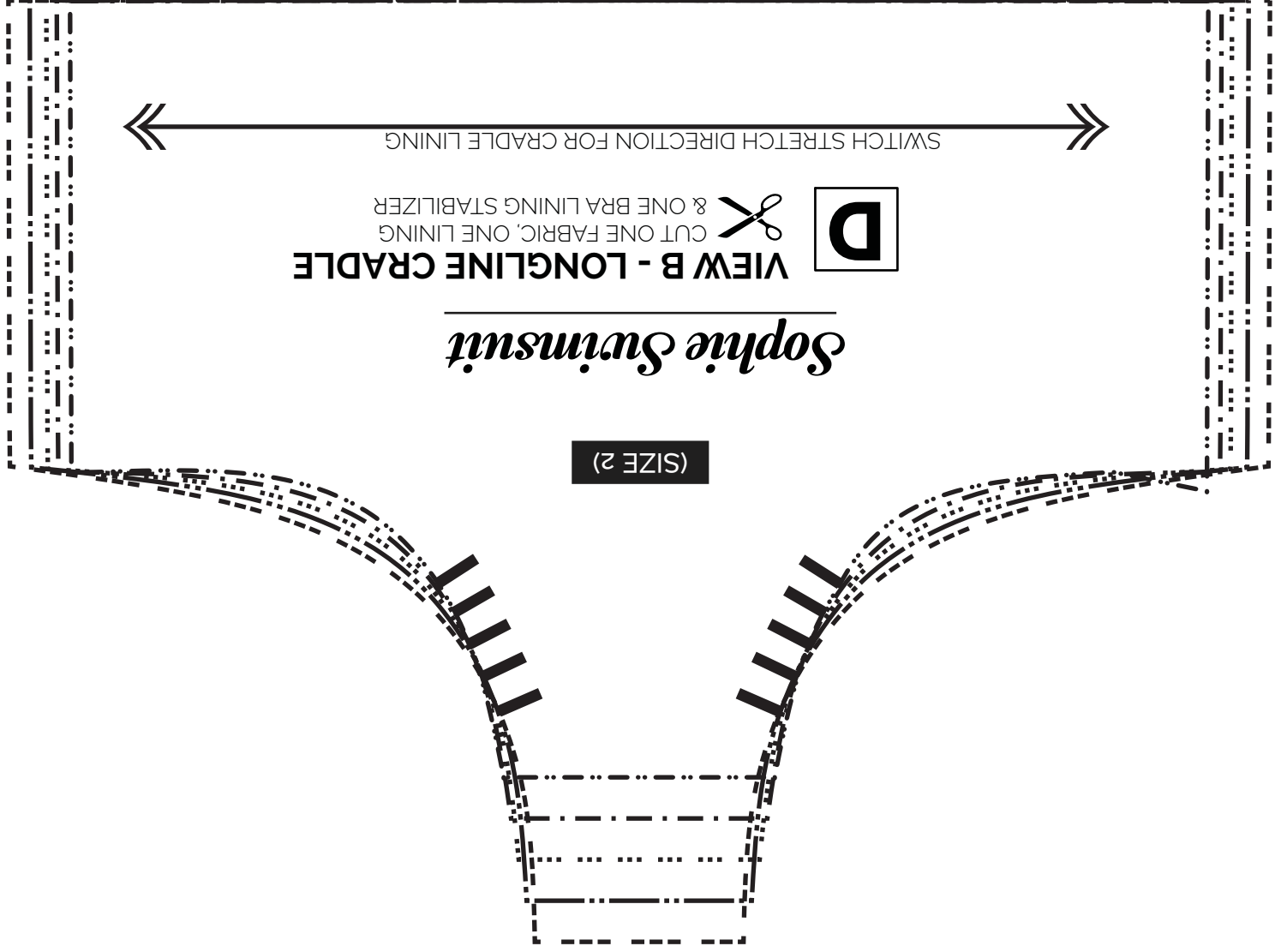
**VIEW B - LONGLINE CRADLE**

CUT ONE FABRIC, ONE LINING  
& ONE BRA LINING, ONE STABILIZER



**D**

(SIZE 2)



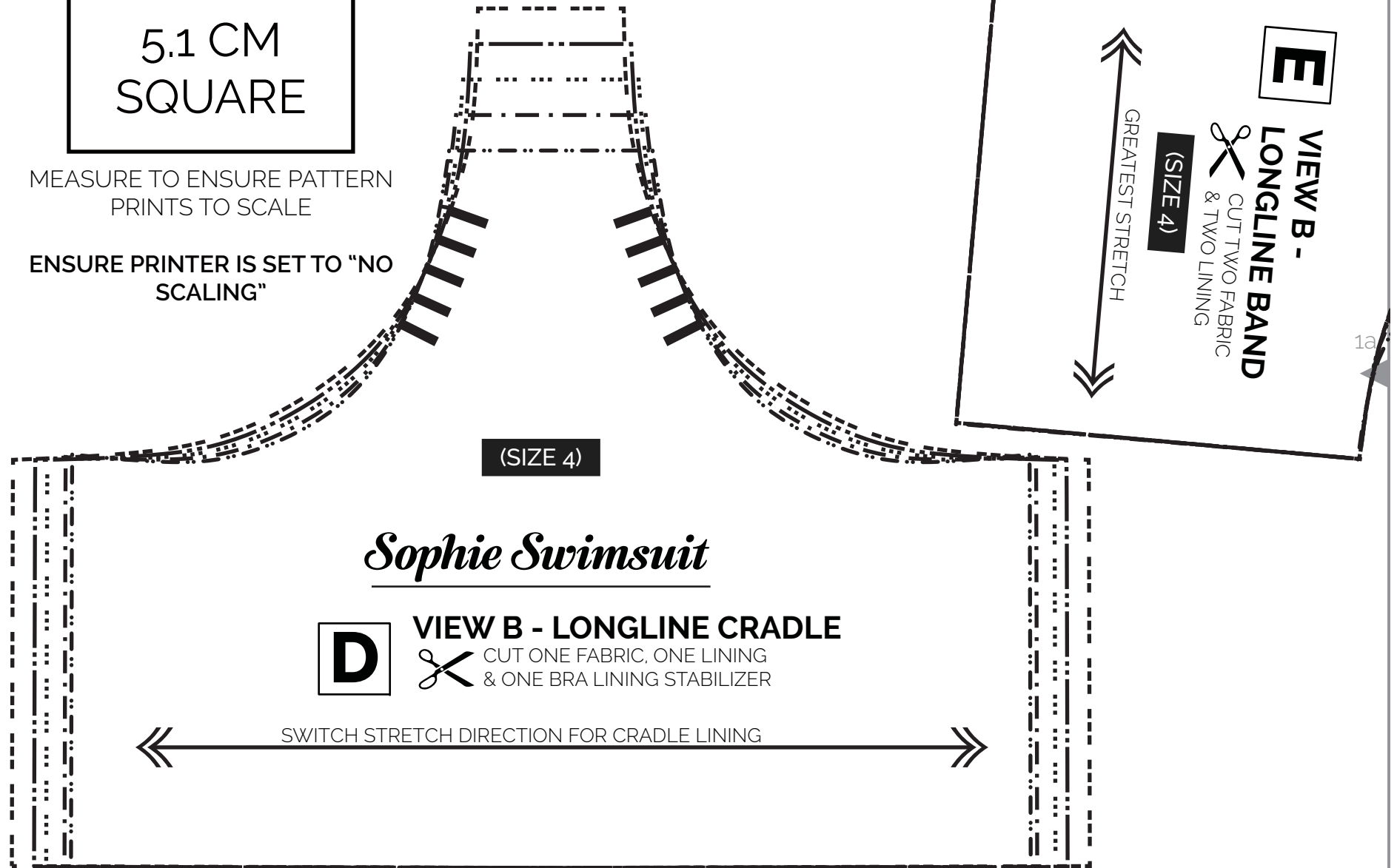
SWITCH STRETCH DIRECTION FOR CRADLE LINING



2 INCH  
SQUARE  
5.1 CM  
SQUARE

MEASURE TO ENSURE PATTERN  
PRINTS TO SCALE

ENSURE PRINTER IS SET TO "NO  
SCALING"



(SIZE 4)

## *Sophie Swimsuit*

**D**

### VIEW B - LONGLINE CRADLE

CUT ONE FABRIC, ONE LINING  
& ONE BRA LINING STABILIZER

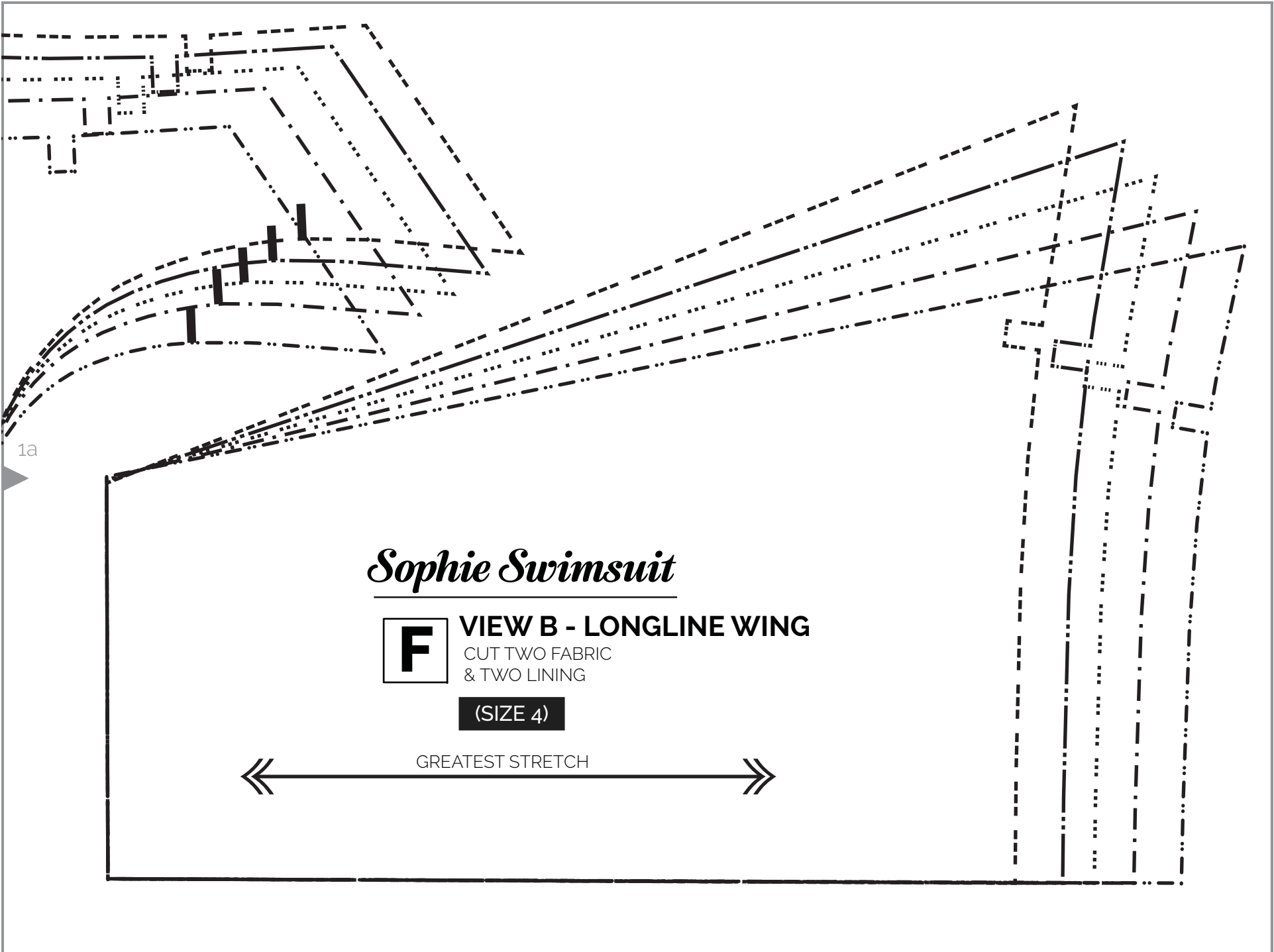
SWITCH STRETCH DIRECTION FOR CRADLE LINING

**E**

VIEW B -  
LONGLINE BAND  
CUT TWO FABRIC  
& TWO LINING  
(SIZE 4)

GREATEST STRETCH

1a



1a

*Sophie Swimsuit*

**F** **VIEW B - LONGLINE WING**  
CUT TWO FABRIC  
& TWO LINING  
**(SIZE 4)**

← GREATEST STRETCH →

2 INCH  
SQUARE  
5.1 CM  
SQUARE

(SIZE 6)

CUT TWO FABRIC  
& TWO LINING

**E**

**VIEW B -  
LONGLINE BAND**



GREATEST STRETCH

MEASURE TO ENSURE PATTERN  
PRINTS TO SCALE

ENSURE PRINTER IS SET TO "NO  
SCALING"

*Sophie Swimsuit*

**F**

**VIEW B - LONGLINE WING**

CUT TWO FABRIC  
& TWO LINING

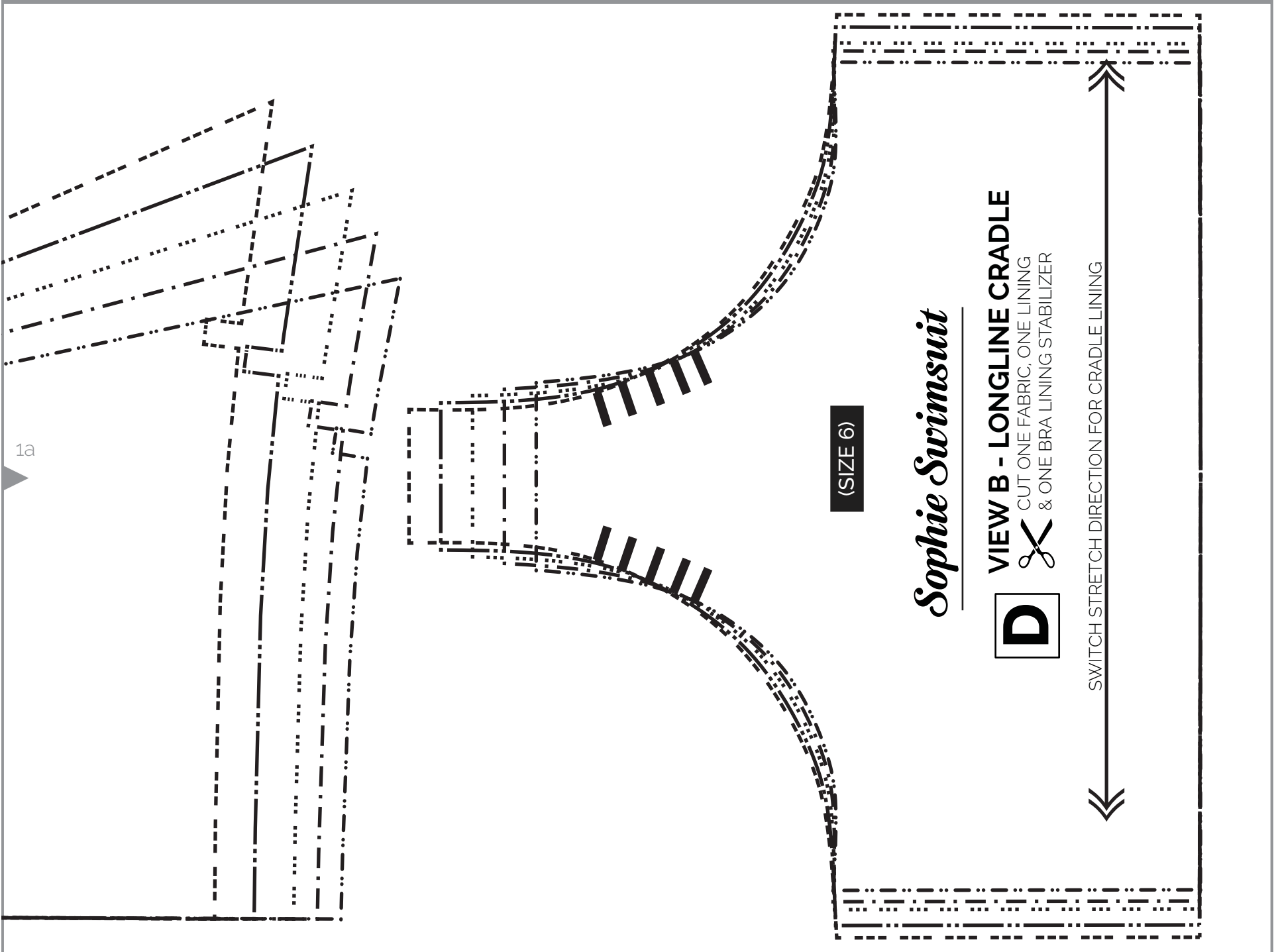
(SIZE 6)



GREATEST STRETCH



1a



(SIZE 6)

*Sophie Swimsuit*



**VIEW B - LONGLINE CRADLE**

CUT ONE FABRIC, ONE LINING  
& ONE BRA LINING STABILIZER



SWITCH STRETCH DIRECTION FOR CRADLE LINING



2 INCH  
SQUARE  
5.1 CM  
SQUARE

MEASURE TO ENSURE PATTERN  
PRINTS TO SCALE

ENSURE PRINTER IS SET TO "NO  
SCALING"

(SIZE 8)

## *Sophie Swimsuit*

**D**

### VIEW B - LONGLINE CRADLE

CUT ONE FABRIC, ONE LINING  
& ONE BRA LINING STABILIZER

SWITCH STRETCH DIRECTION FOR CRADLE LINING

**E**

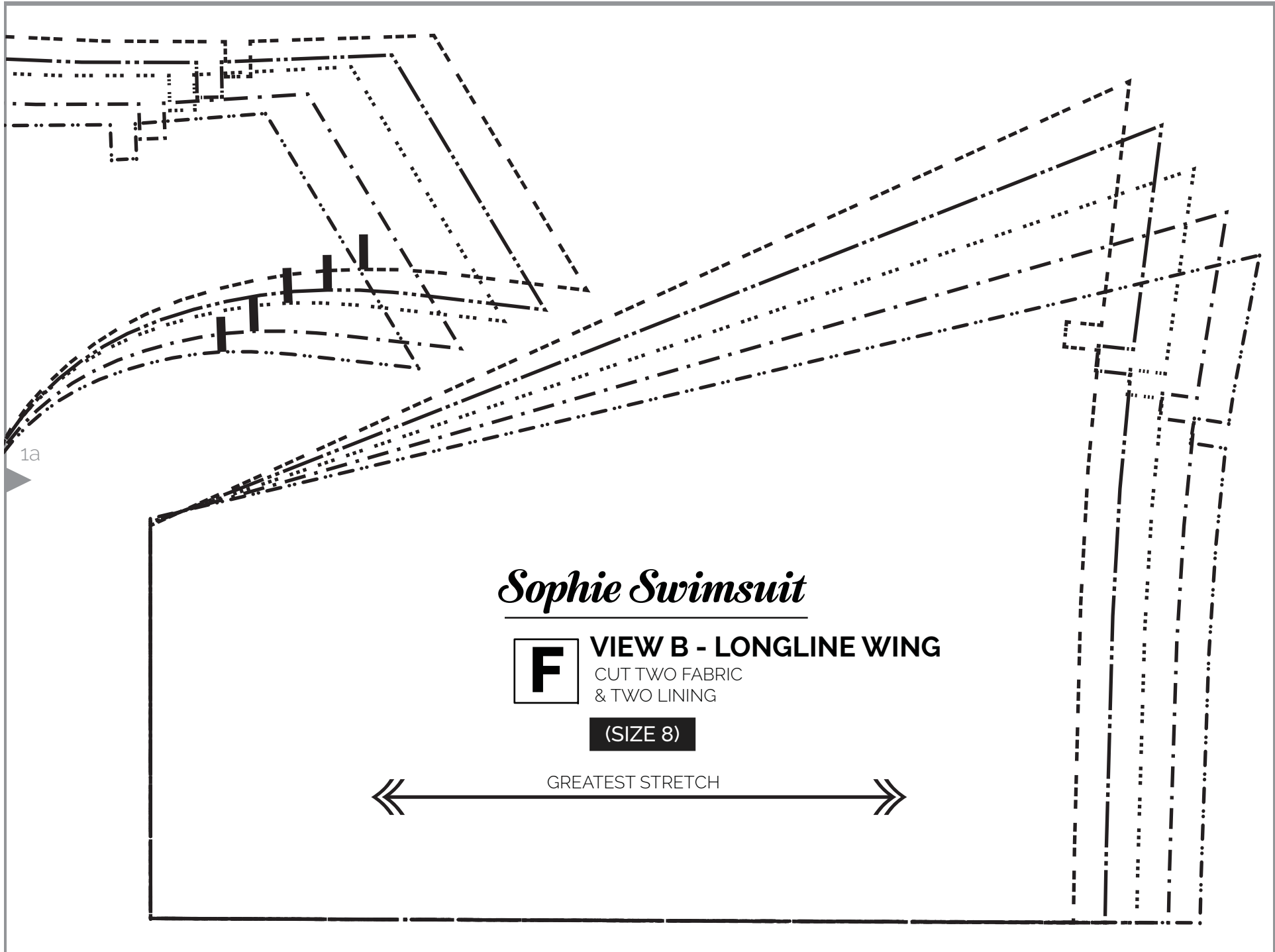
### VIEW B - LONGLINE BAND

CUT TWO FABRIC  
& TWO LINING

(SIZE 8)

GREATEST STRETCH

1a



1a

# *Sophie Swimsuit*

**F**

## VIEW B - LONGLINE WING

CUT TWO FABRIC  
& TWO LINING

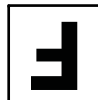
(SIZE 8)

← GREATEST STRETCH →

*Sophie Swimsuit*

VIEW B - LONGLINE WING

CUT TWO FABRIC  
& TWO LINING



(SIZE 10)

GREATEST STRETCH

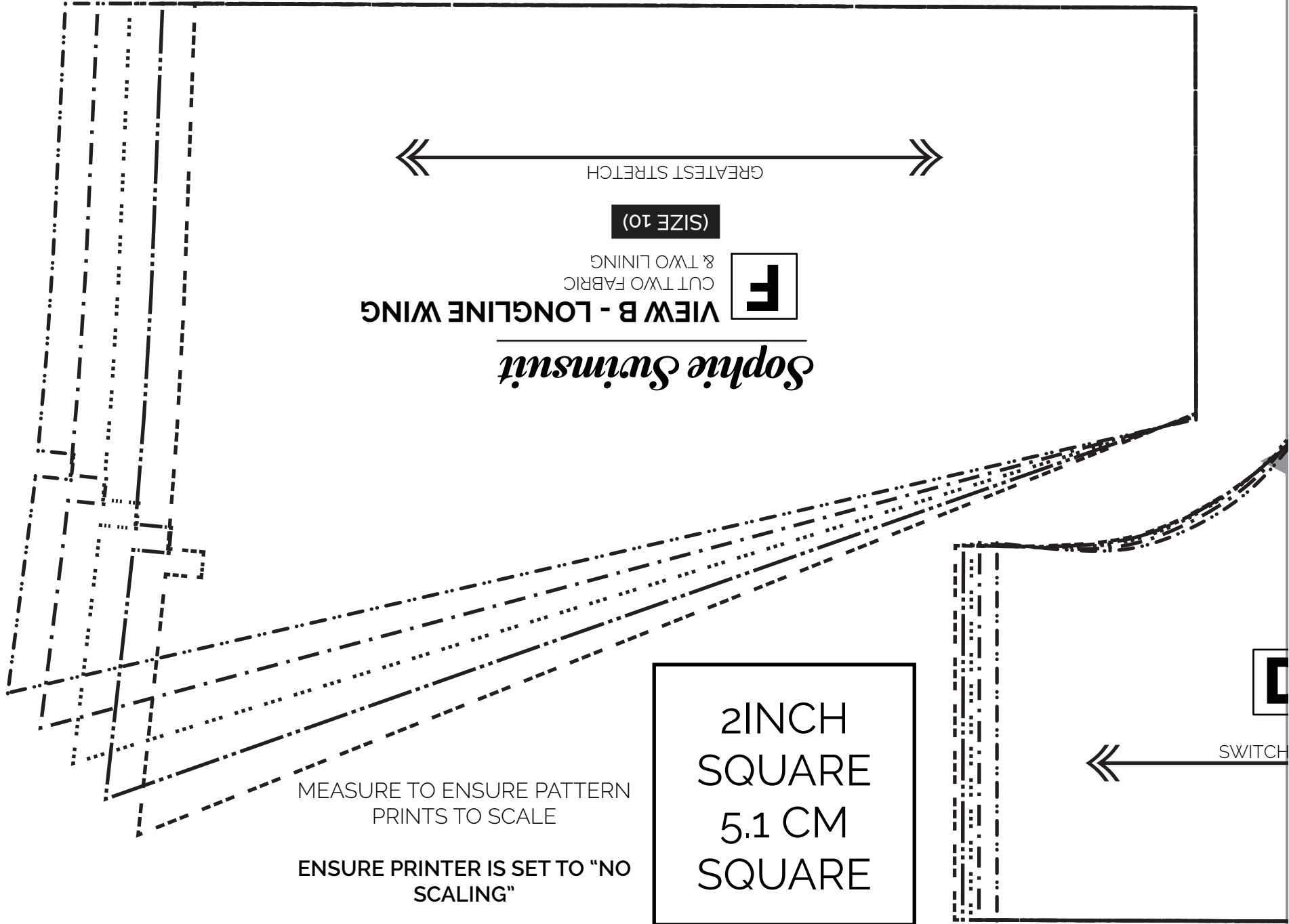


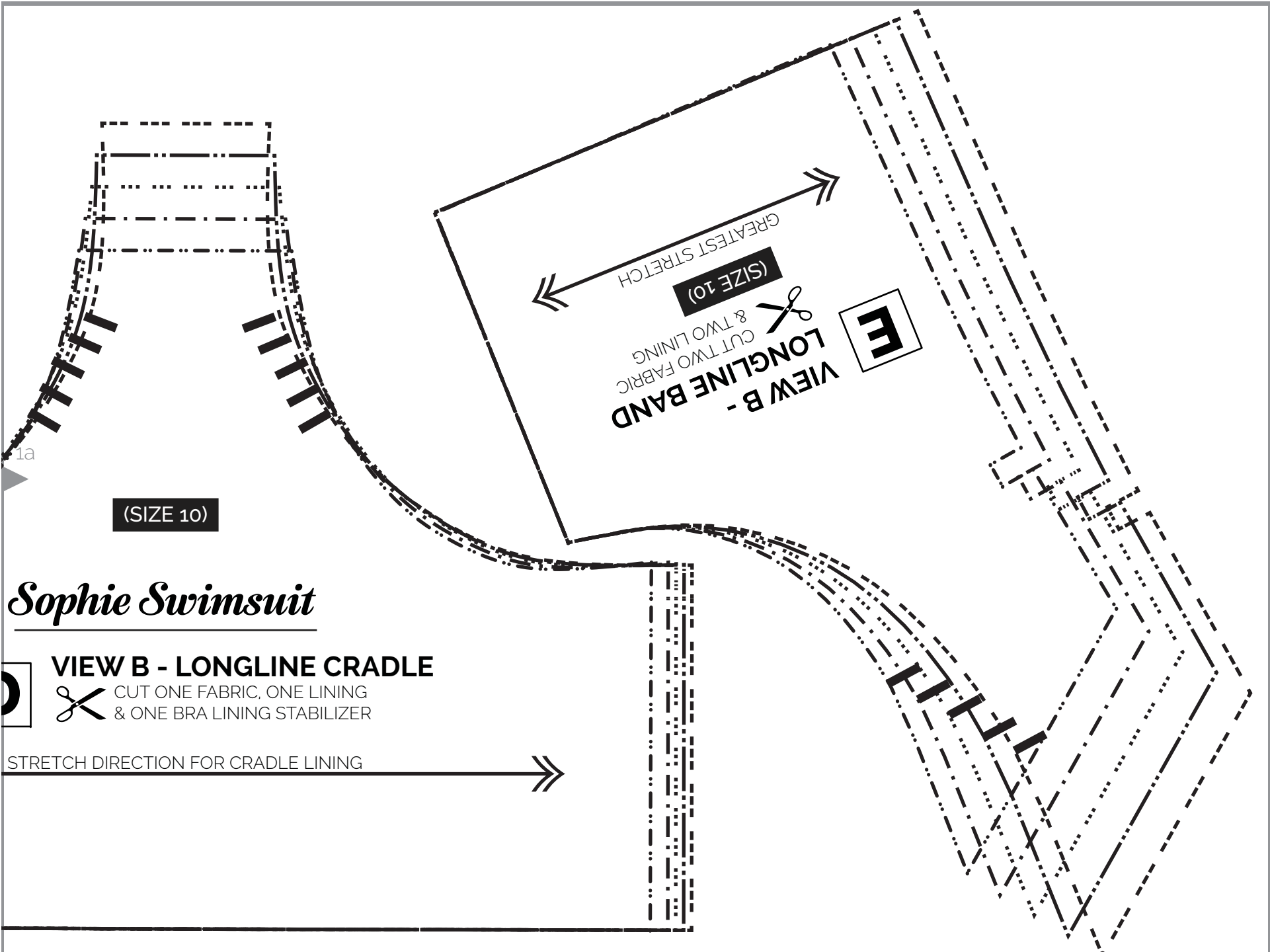
2 INCH  
SQUARE  
5.1 CM  
SQUARE

MEASURE TO ENSURE PATTERN  
PRINTS TO SCALE

ENSURE PRINTER IS SET TO "NO  
SCALING"

SWITCH





2 INCH  
SQUARE  
5.1 CM  
SQUARE

MEASURE TO ENSURE PATTERN  
PRINTS TO SCALE

ENSURE PRINTER IS SET TO "NO  
SCALING"

## *Sophie Swimsuit*

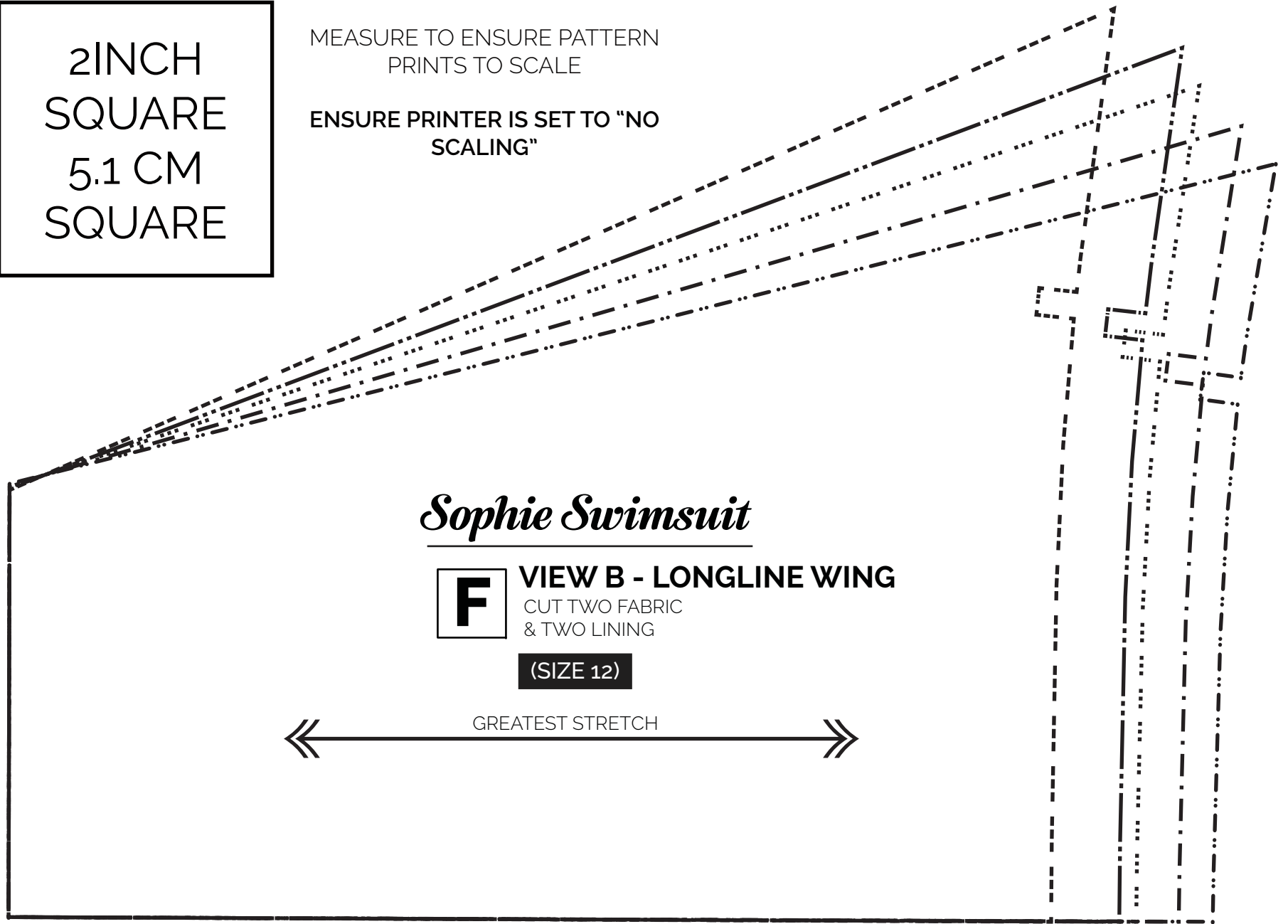
**F**

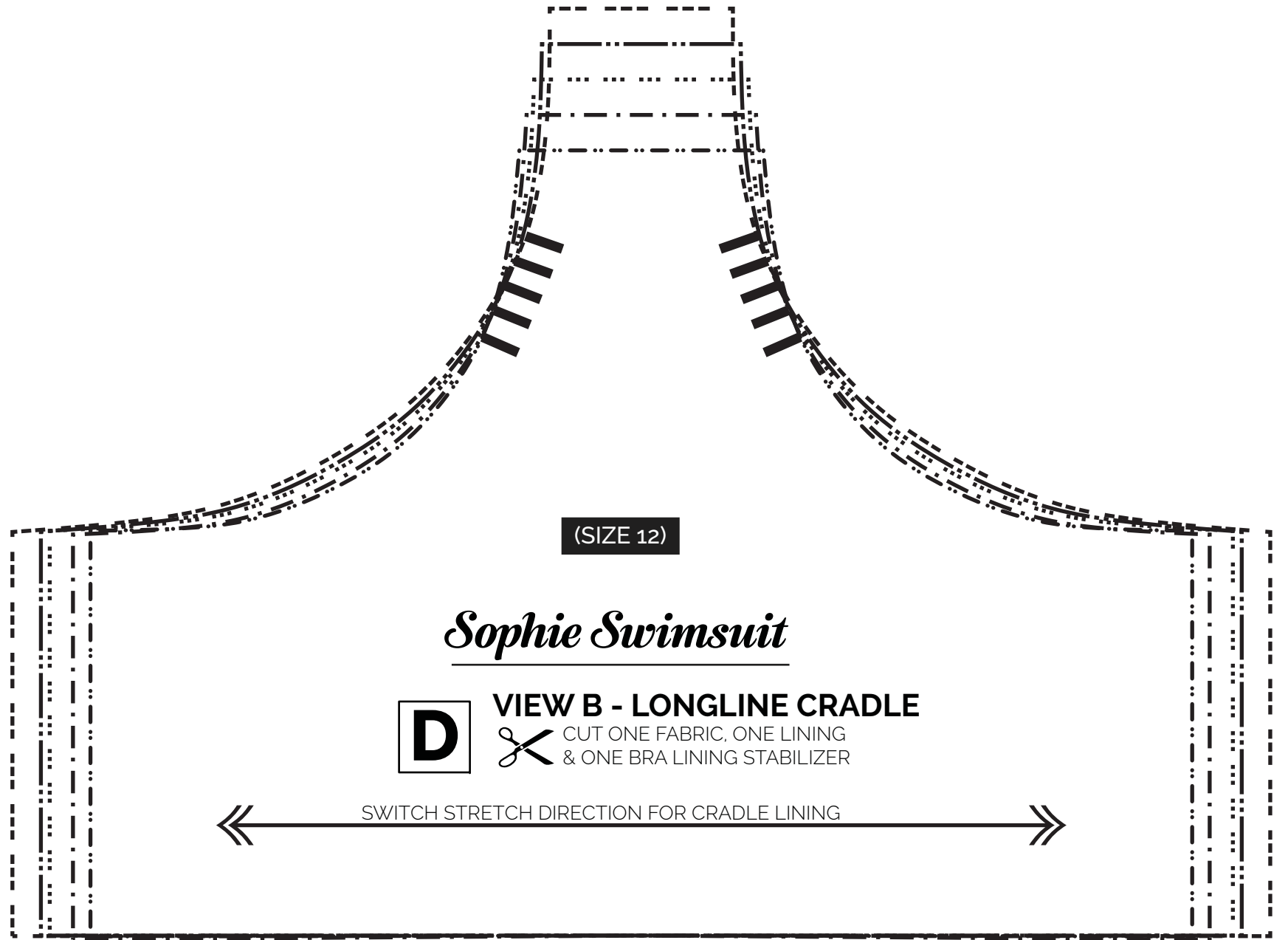
### VIEW B - LONGLINE WING

CUT TWO FABRIC  
& TWO LINING

(SIZE 12)

GREATEST STRETCH





(SIZE 12)

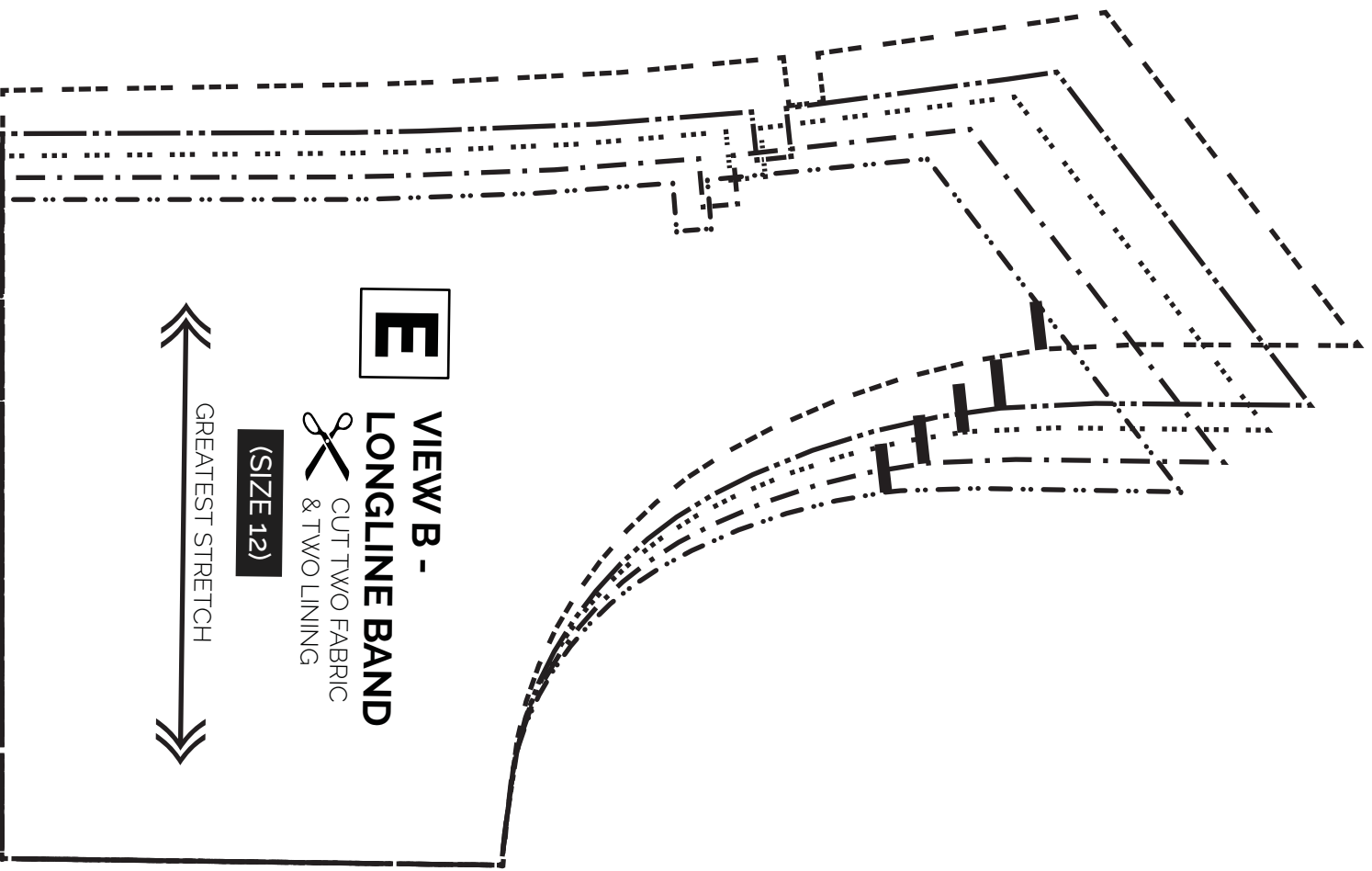
*Sophie Swimsuit*

**D**

**VIEW B - LONGLINE CRADLE**

 CUT ONE FABRIC, ONE LINING  
& ONE BRA LINING STABILIZER

← SWITCH STRETCH DIRECTION FOR CRADLE LINING →



**E**

VIEW B -

**LONGLINE BAND**

CUT TWO FABRIC  
& TWO LINING

(SIZE 12)



GREATEST STRETCH



2 INCH  
SQUARE  
5.1 CM  
SQUARE

MEASURE TO ENSURE PATTERN  
PRINTS TO SCALE

ENSURE PRINTER IS SET TO "NO  
SCALING"

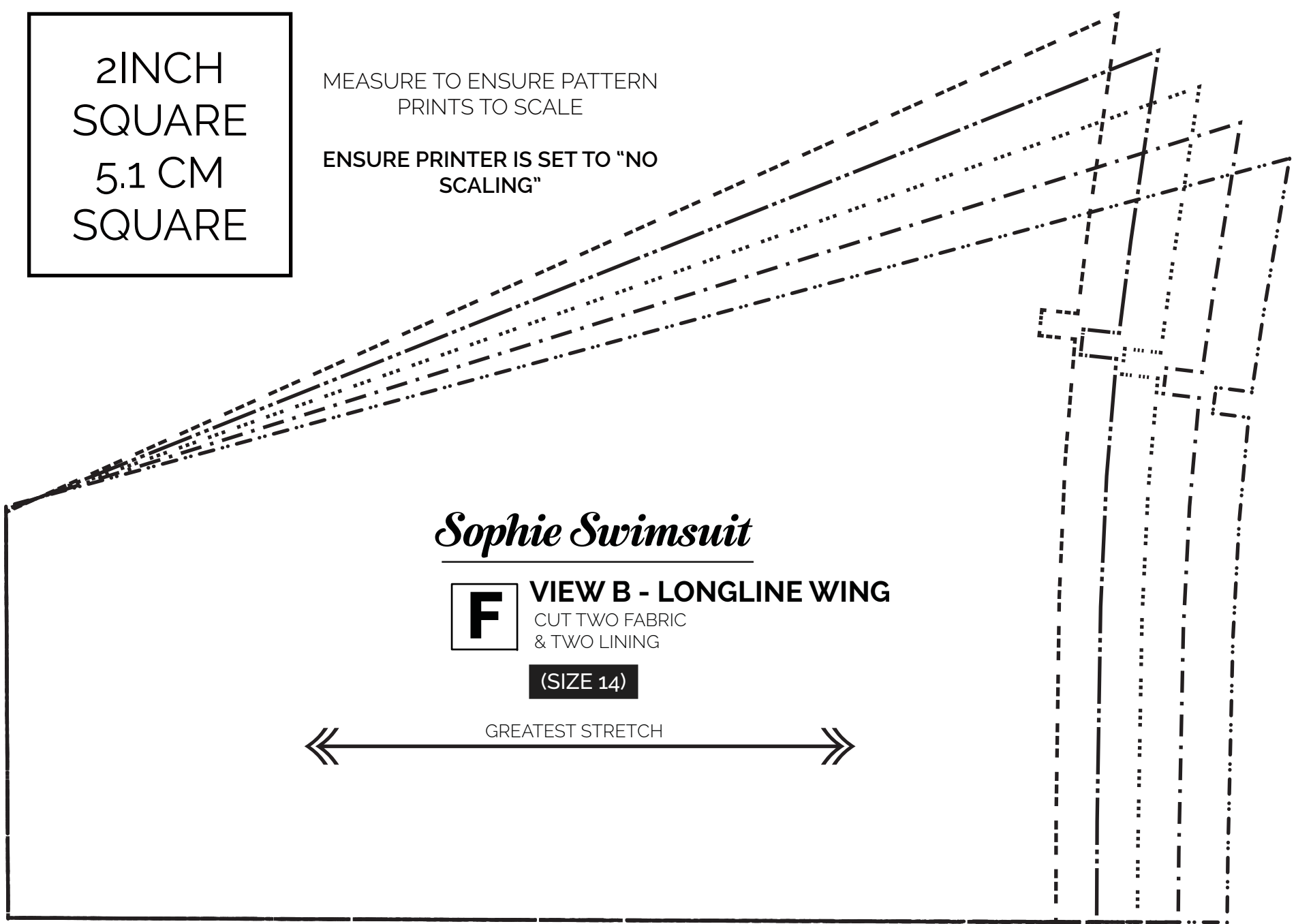
## *Sophie Swimsuit*

**F**

### VIEW B - LONGLINE WING

CUT TWO FABRIC  
& TWO LINING

(SIZE 14)





(SIZE 14)

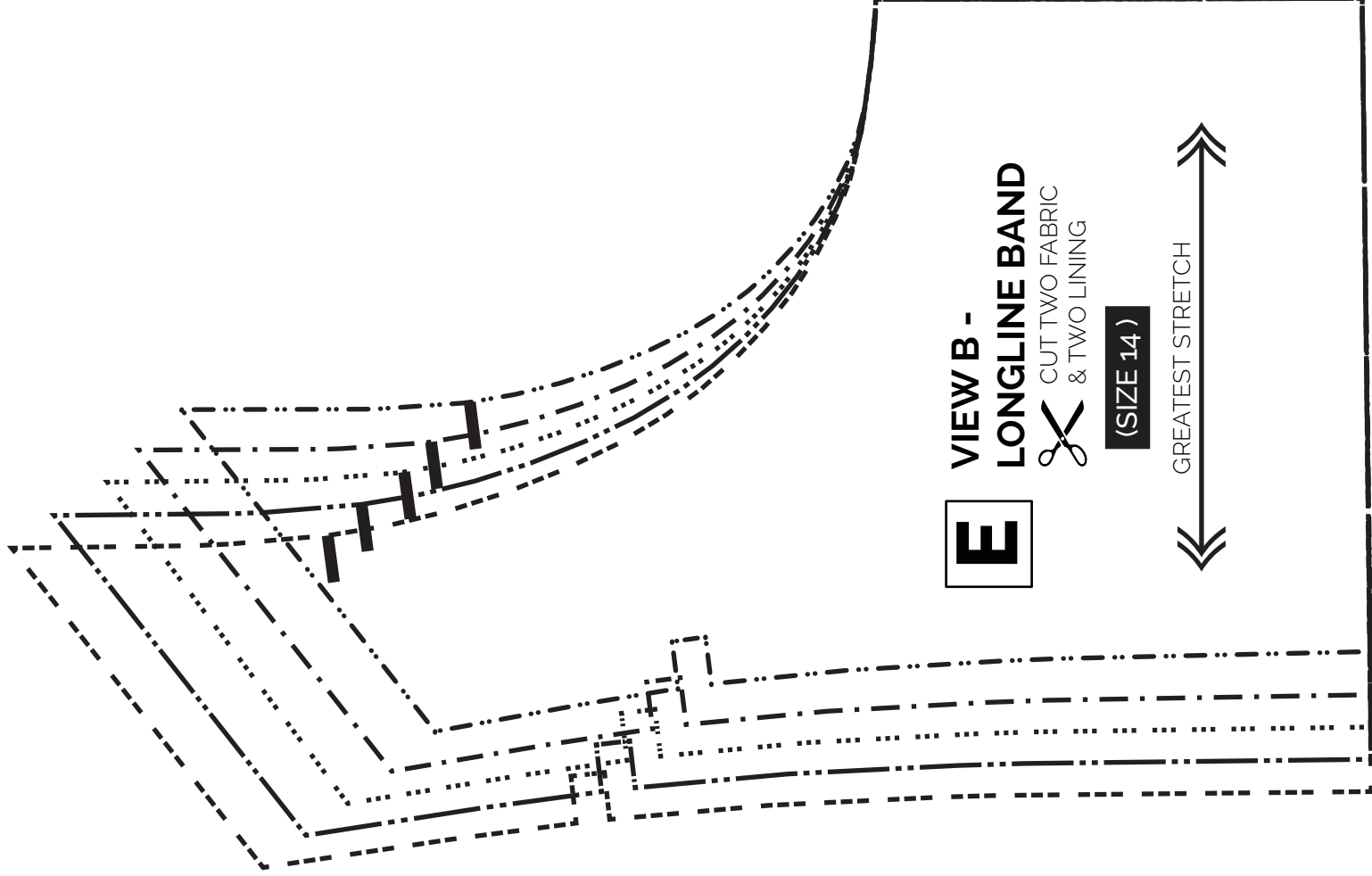
*Sophie Swimsuit*

**D**

**VIEW B - LONGLINE CRADLE**

CUT ONE FABRIC, ONE LINING  
& ONE BRA LINING STABILIZER

SWITCH STRETCH DIRECTION FOR CRADLE LINING



**E**

**VIEW B -  
LONGLINE BAND**

CUT TWO FABRIC  
& TWO LINING



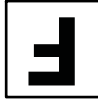
**(SIZE 14)**



GREATEST STRETCH

*Sophie Swimsuit*

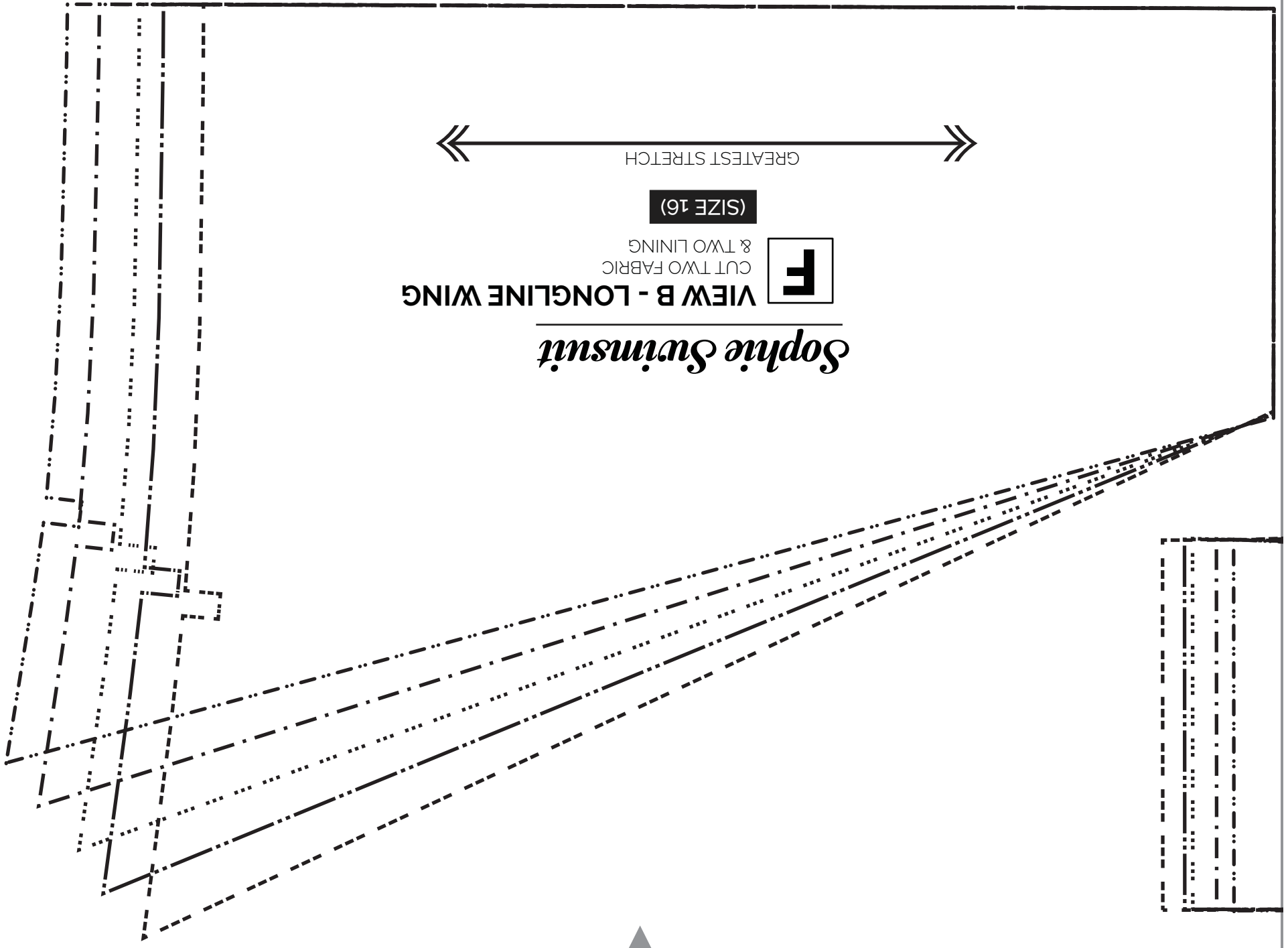
VIEW B - LONGLINE WING



CUT TWO FABRIC  
& TWO LINING

(SIZE 16)

GREATEST STRETCH



2 INCH  
SQUARE  
5.1 CM  
SQUARE

MEASURE TO ENSURE PATTERN  
PRINTS TO SCALE

ENSURE PRINTER IS SET TO "NO  
SCALING"

(SIZE 16)

## *Sophie Swimsuit*

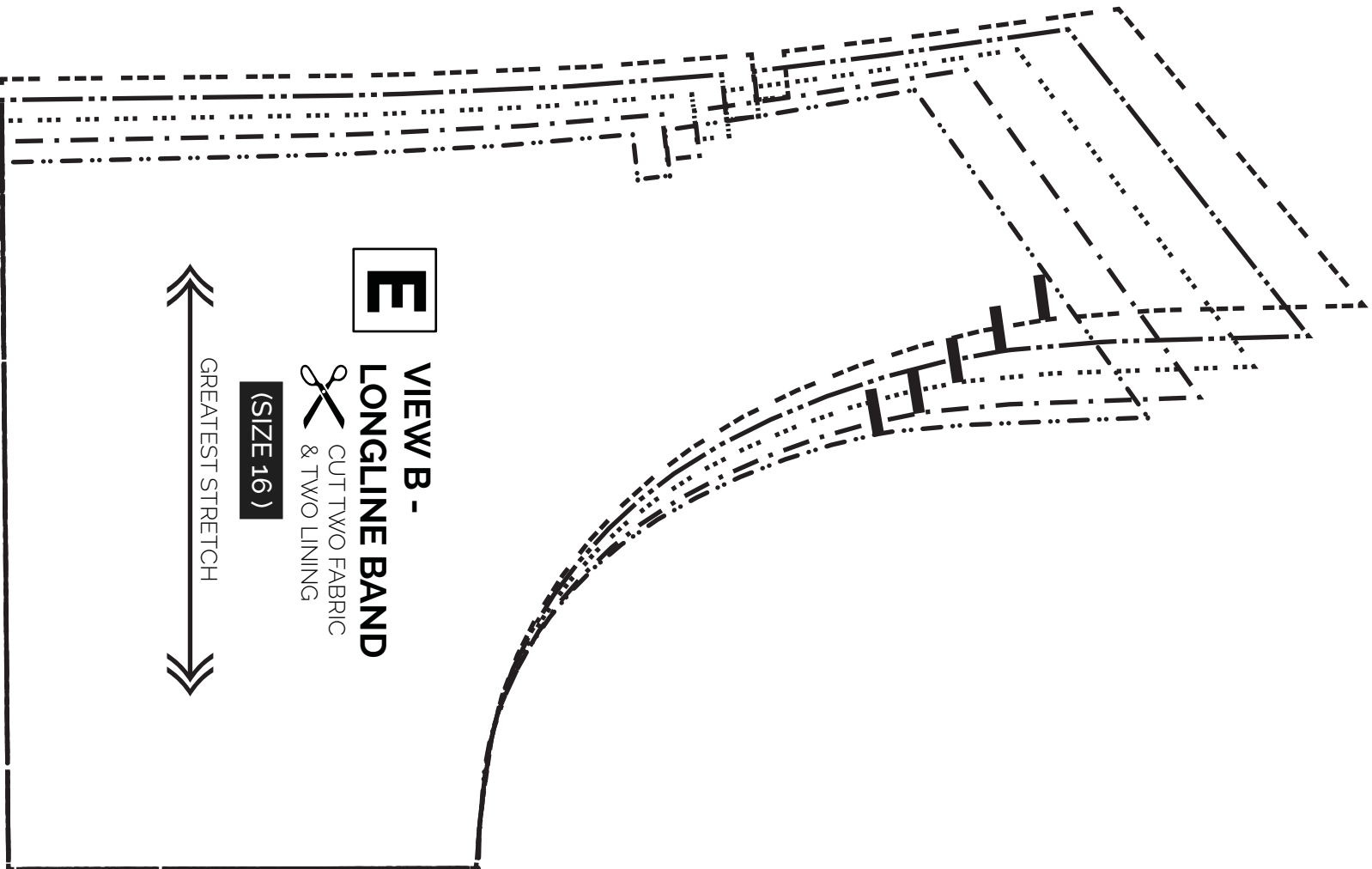
**D**

### VIEW B - LONGLINE CRADLE

 CUT ONE FABRIC, ONE LINING  
& ONE BRA LINING STABILIZER

SWITCH STRETCH DIRECTION FOR CRADLE LINING





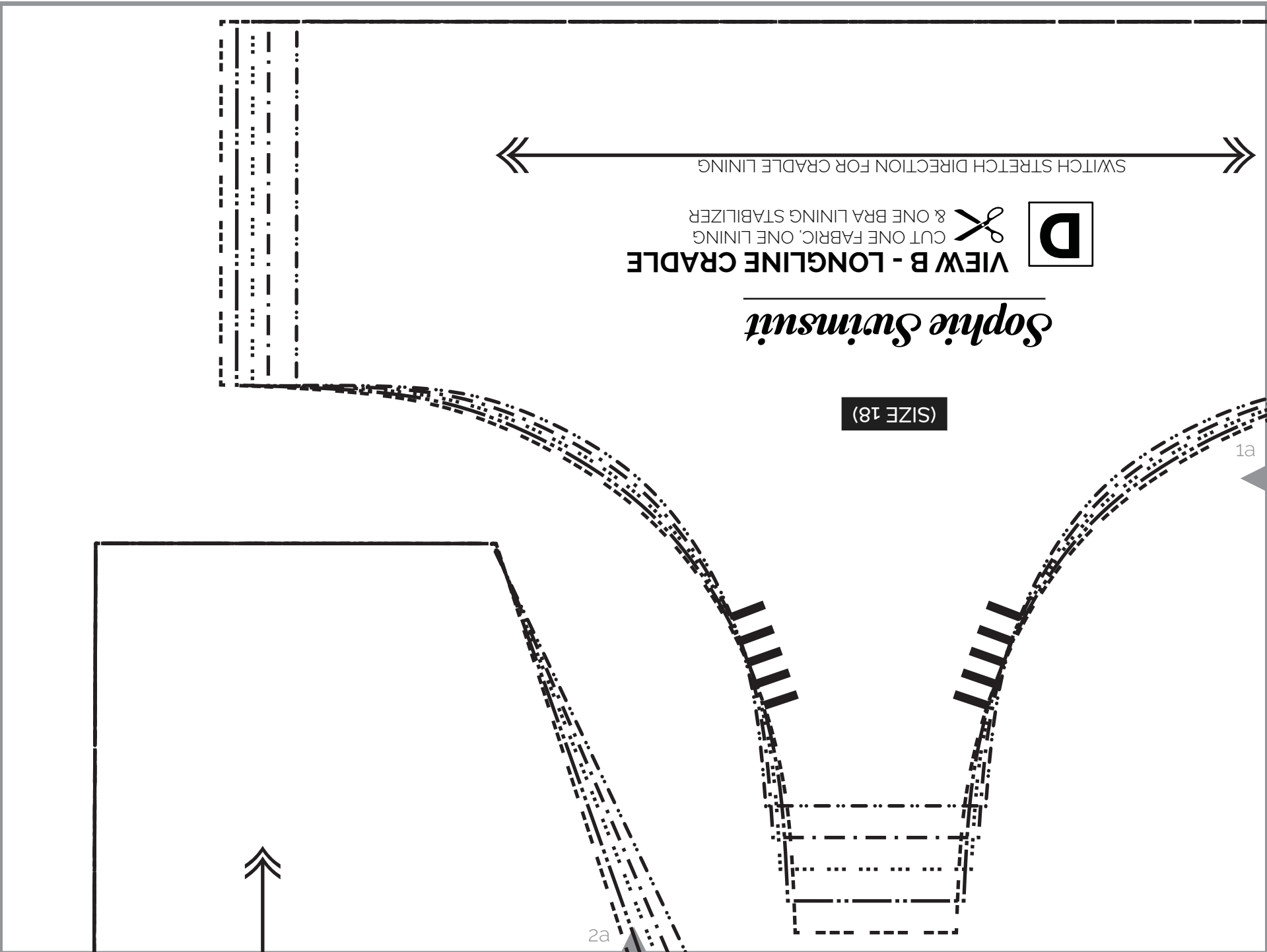
**E**

**VIEW B -  
LONGLINE BAND**

 **CUT TWO FABRIC  
& TWO LINING**

**(SIZE 16)**

 **GREATEST STRETCH**



SWITCH STRETCH DIRECTION FOR CRADLE LINING

**D**  
CUT ONE FABRIC, ONE LINING  
& ONE BRA LINING STABILIZER

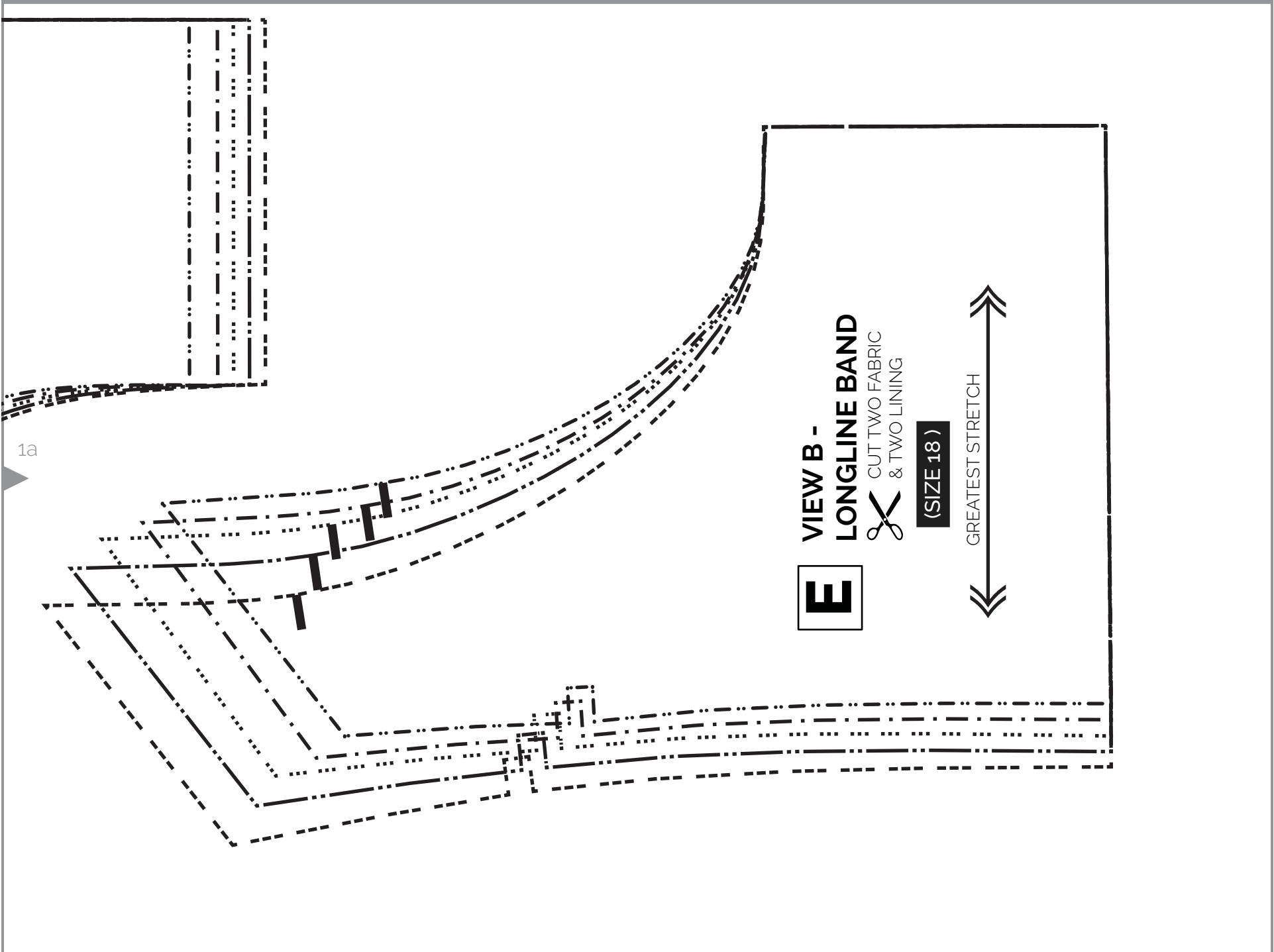
*Sophie Swimsuit*

(SIZE 18)

1a

2a





1a

**E**

**VIEW B -  
LONGLINE BAND**

CUT TWO FABRIC  
& TWO LINING



**(SIZE 18)**

GREATEST STRETCH





2 INCH  
SQUARE  
5.1 CM  
SQUARE

MEASURE TO ENSURE PATTERN  
PRINTS TO SCALE

ENSURE PRINTER IS SET TO "NO  
SCALING"

2a

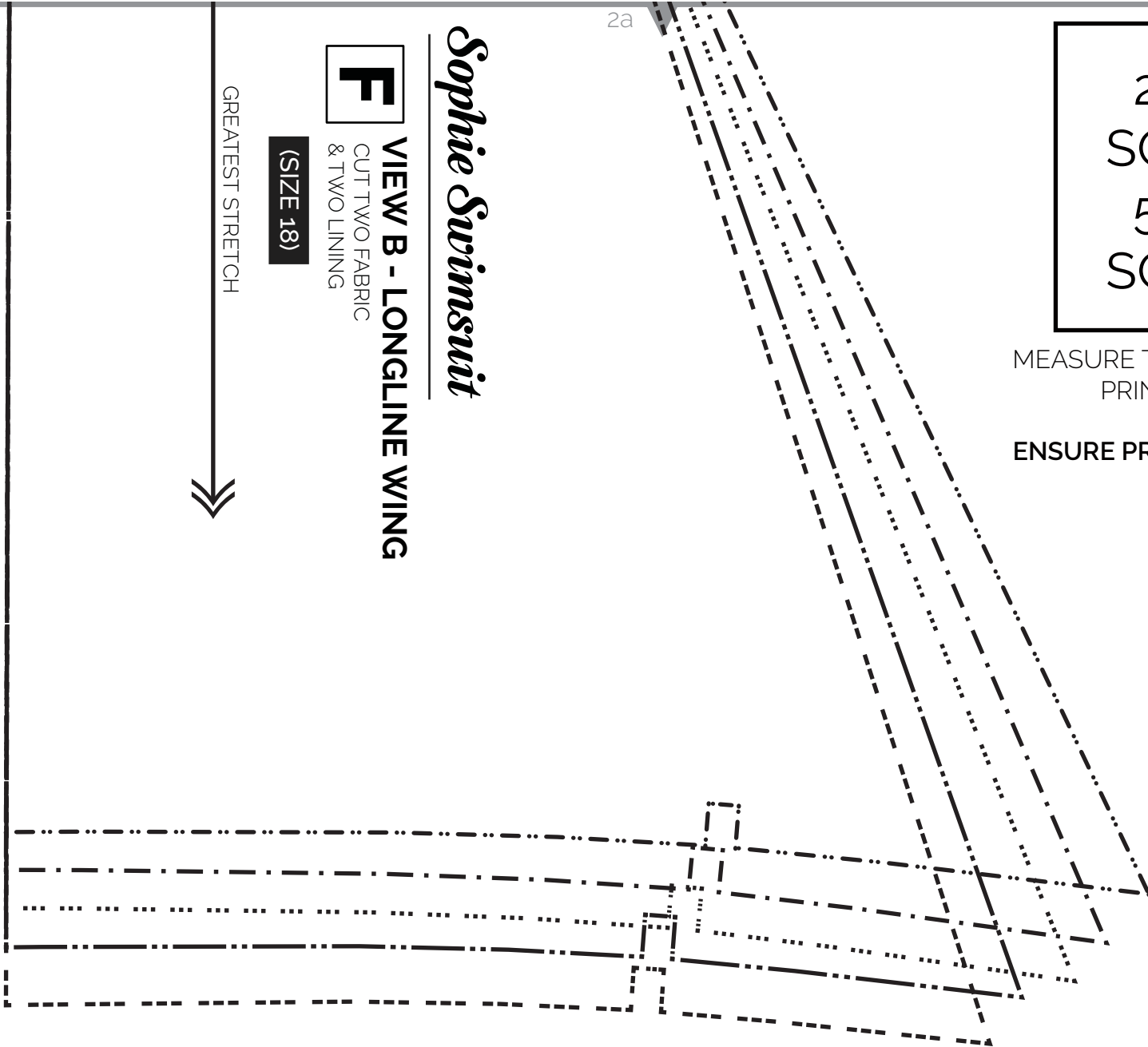
*Sophie Swimsuit*

**VIEW B - LONGLINE WING**

**F** CUT TWO FABRIC  
& TWO LINING

**(SIZE 18)**

GREATEST STRETCH



**VIEW B - LONGLINE CRADLE**

CUT ONE FABRIC, ONE LINING  
& ONE BRA LINING STABILIZER



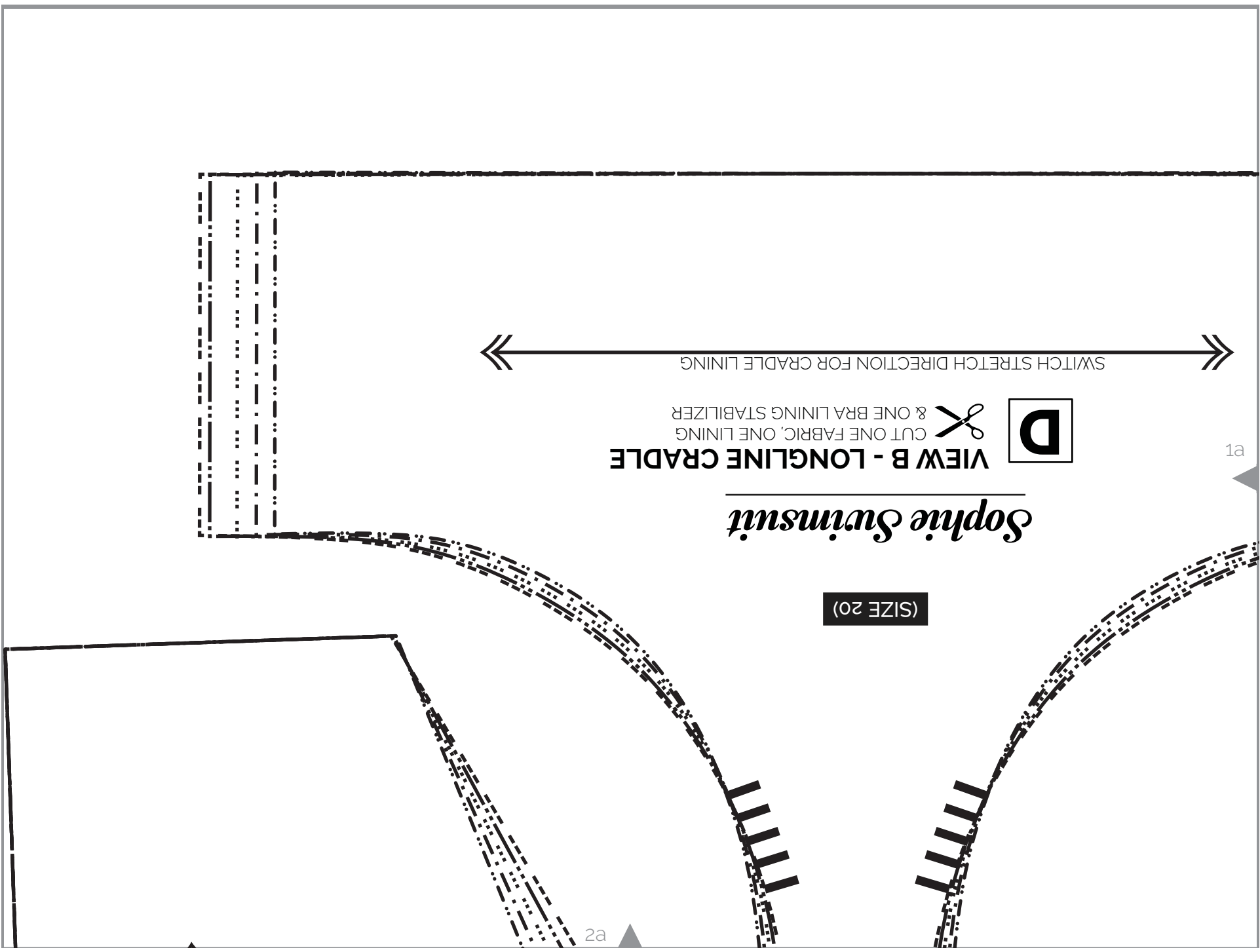
*Sophie Swimsuit*

(SIZE 20)

SWITCH STRETCH DIRECTION FOR CRADLE LINING

1a

2a



2 INCH  
SQUARE  
5.1 CM  
SQUARE

MEASURE TO ENSURE PATTERN  
PRINTS TO SCALE

ENSURE PRINTER IS SET TO "NO  
SCALING"

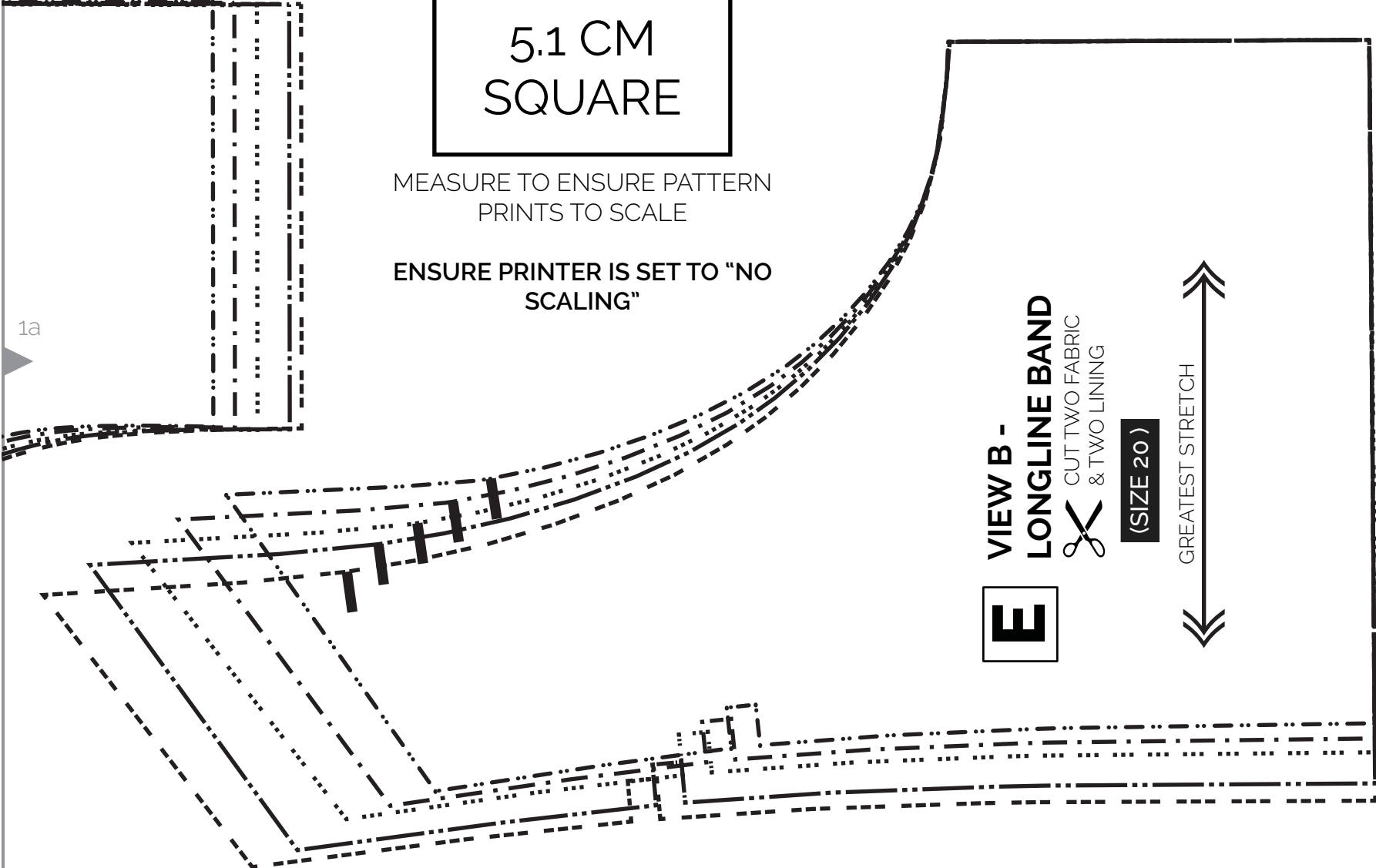
1a

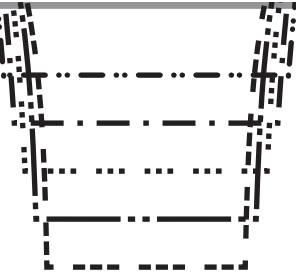
VIEW B -  
LONGLINE BAND  
CUT TWO FABRIC  
& TWO LINING

**E**

(SIZE 20)

GREATEST STRETCH





2a

# *Sophie Swimsuit*

## **VIEW B - LONGLINE WING**

**F**

CUT TWO FABRIC  
& TWO LINING

**(SIZE 20)**

GREATEST STRETCH

